

# The Events Structure Product Guide

Containers - Statement



Statement is a truly revolutionary Shipping Container cluster for hire, designed to provide a huge onsite presence far beyond the highly affordable hire investment. The set of 20' Shipping Containers are designed and built to an incredibly high level of interior and exterior finish, providing a lasting impression on consumers. The upper deck provides an exceptional environment for VIP entertainment or can simply provide a unique additional

consumer activation area. The Statement Event Container provides a dynamic environment that can be used for experiential, retailing, catering and hospitality applications, and benefits from superior finishes throughout.

Statement Containers open to the front via a sophisticated roller door system that helps to provide a full 20' (6m) access entrance to the internal environment. The environment is then extended to the exterior, providing an extended

# The Events Structure Product Guide

## Containers - Statement



experiential environment, using an anti-slip vinyl stage surface that extends to 6m x 2m.

The upper deck is accessed via a single external stair unit that enable a maximum of 12 guests to enter the gallery that can be used as a viewing platform, a VIP entertaining area, a product demonstration area or a presentation platform.

Each of the containers on statement has an engineered slick design that allows for 6 flags to be positioned in an equal manner. This brings a truly revolutionary look to the container. The hand rails have room for branding space reaching up to 6120mm x 1000mm along the front and back.

The interior walls are paint finished in matt black on the original architectural corrugation finish, the back walls contain 3 off graphic positions (each 1500mm<sup>2</sup>) and the bulkhead wall features 1 off graphic position (1500mm<sup>2</sup>).

The Statement Event Container have an external 32 amp mains input that can be powered from an onsite mains power connection or generator input. Internally the container has a fuse box and internal power distribution to 8 off 13 amp sockets.

### CONTAINER FEATURES

- Standard shipping container cargo doors
- Interior & exterior custom paint finish
- Exterior 32 amp power connection
- Electrical distribution and fusebox
- 13.4m<sup>2</sup> internal capacity
- Large internal / external graphics
- Rapidly deployed in less than 3 hours with 3 crew
- Full disabled access for staff area (optional)
- External awning (optional)
- External floor decking (optional)

### DIMENSIONS

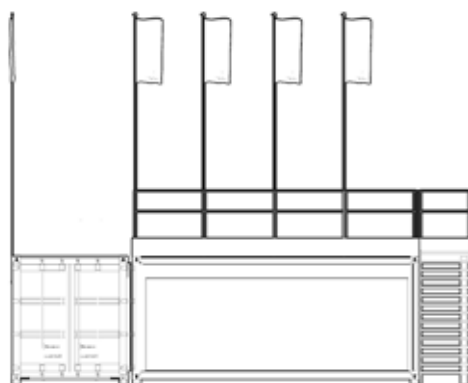
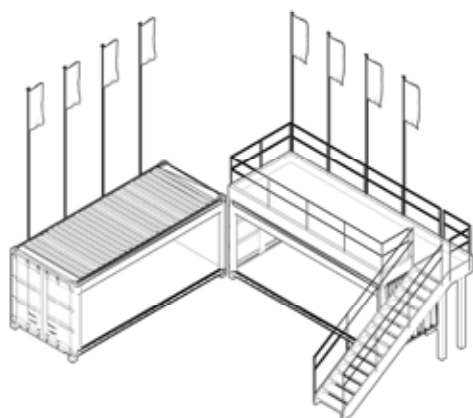
Containers and stairs length	10996mm
Containers length without stairs	8546mm
Container width	2440mm
Container height	2590mm

### POWER

- 32 amp external mains input
- Generator power available on request

# The Events Structure Product Guide

Containers - Statement



# The Events Structure Product Guide

## Containers - Statement

